



Cultural Heritage Disaster Risk Management Center, Japan

Preserving history and culture for the future

Who We Are

The Cultural Heritage Disaster Risk Management Center (CHDRMC) was established on October 1, 2020, with the goal of protecting a diverse range of cultural heritage from frequently occurring disasters.

We work in tandem with staff members of two research institutes and four national museums of the National Institutes for Cultural Heritage (NICH).

Our Missions

CHDRMC undertakes various initiatives based on its three core missions of ① reducing disaster risk to safeguard our cultural heritage, ② building systems and developing technologies to save disaster-hit cultural heritage as quickly as possible, and ③ providing support for salvage operations for cultural heritage when disasters occur.



① A workshop on the environmental monitoring of temporary storage facilities



② A shaking-table experiment of replicated museum gallery



③ Emergency assistance responding to requests from damaged local government

Our Five Main Initiatives

1

Building Regional Disaster Preparedness and Response Frameworks

We make it a goal to build regional disaster preparedness and response frameworks for cultural heritage in close cooperation with other institutions, such as local governments, museums and galleries, universities and research institutions, and voluntary groups.



A meeting on regional disaster preparedness and response framework for cultural heritage with local government

2

Preparing Disaster Guidelines

We formulate guidelines to facilitate the swift commencement of cultural heritage salvage.



Guidebook for Radiation Protection of Cultural Properties 2021 (in Japanese)

3

Developing Technologies for Salvage, Storage, and Exhibition

We develop technologies for the safe storage, exhibition, and emergency salvage of cultural heritage.



A survey on the environment of temporary storage facilities during disasters

4

Raising Awareness

We raise awareness and spread knowledge on cultural heritage disaster risk management through providing instruction, advice, training and so forth. We aim to reach a wide audience both within Japan and overseas.



A workshop on the emergency treatment of water-damaged paper materials

5

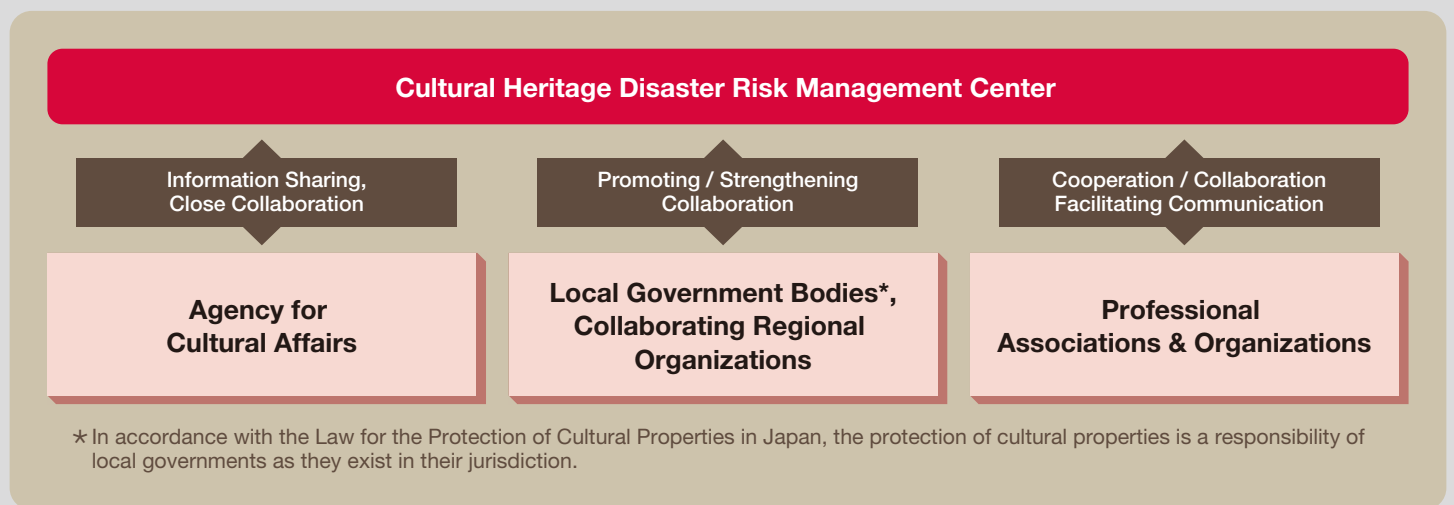
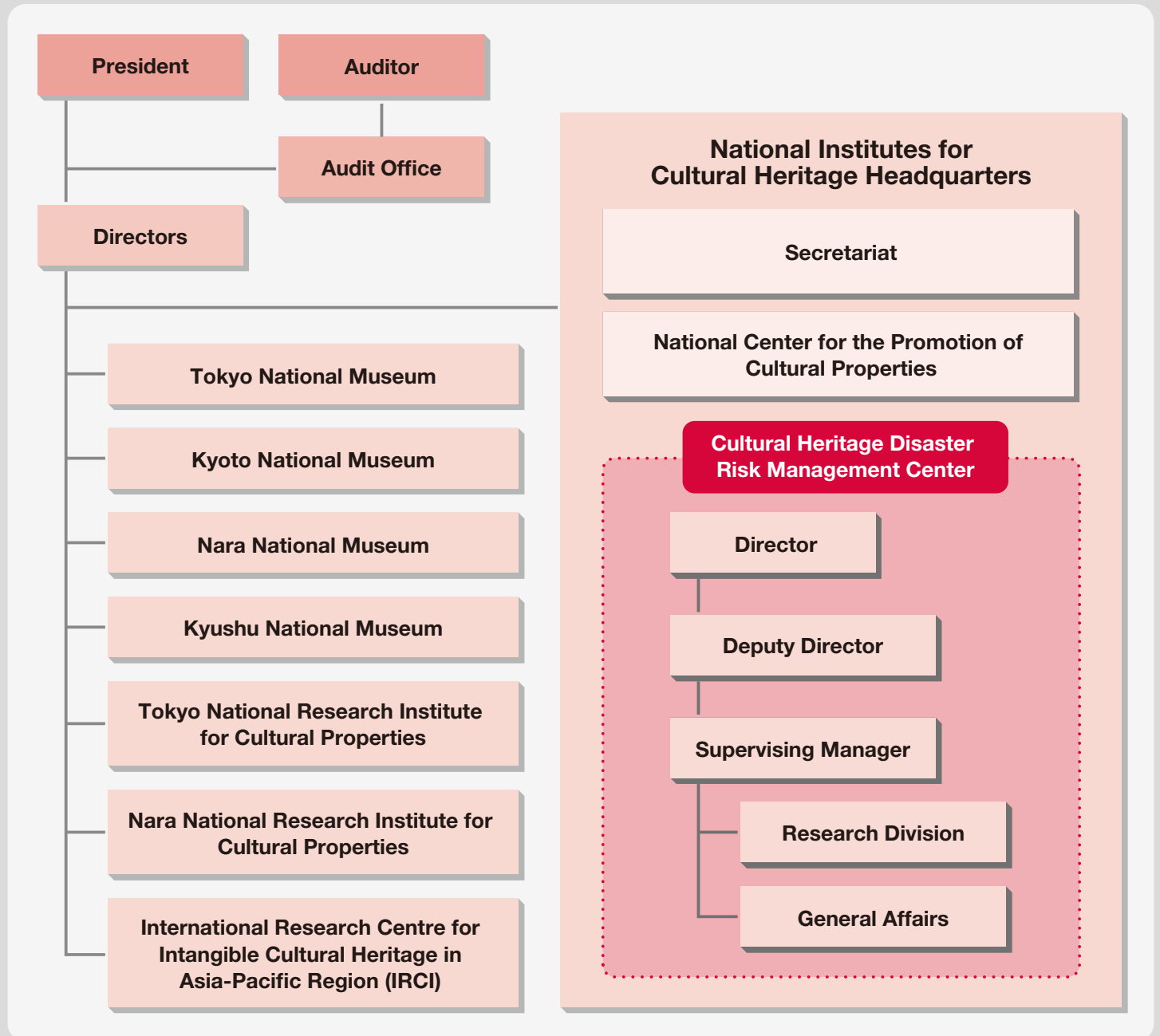
Collecting and Utilizing Information

We collect information on cultural heritage disaster risk management and examine how this can contribute to Japanese cultural heritage disaster risk management system.



A survey on methods of obtaining location information on damaged cultural properties and identifying damage

Organizational Chart



Contact

 Cultural Heritage Disaster Risk Management Center, Japan

Address: 2-9-1 Nijo-cho, Nara City, Nara Prefecture 630-8577

Tel: +81-742-31-9056 E-mail: info_bosai@nich.go.jp Our website: <https://ch-drm.nich.go.jp/english/>

